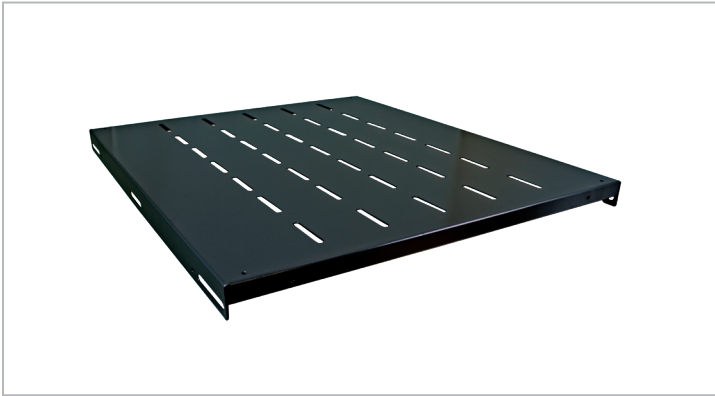




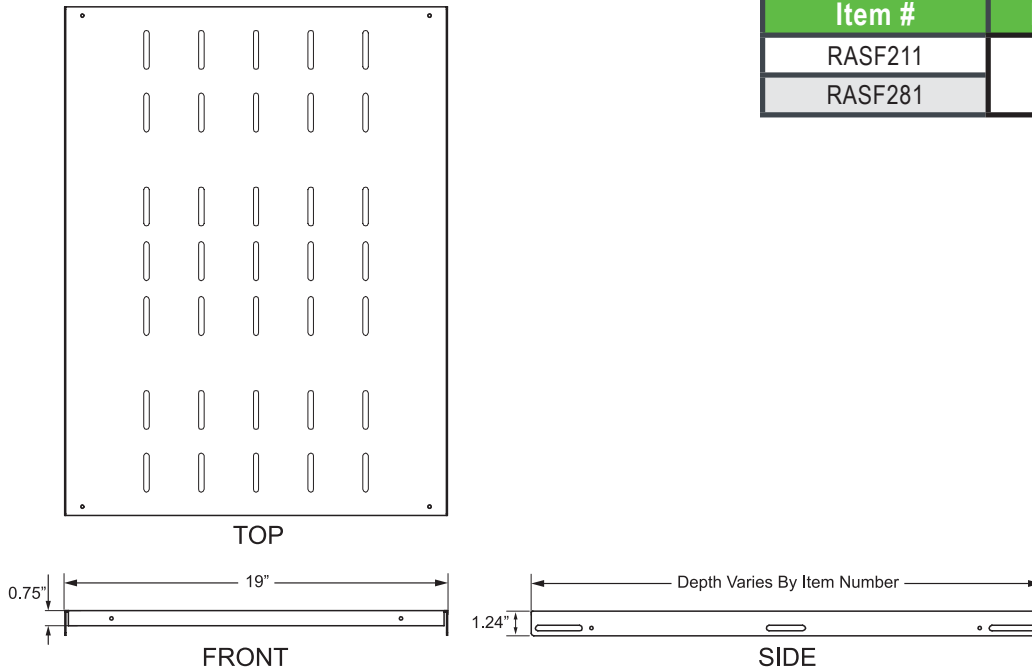
Fixed Shelf



Description

This product is designed to add the inclusion of a fixed shelf to your network or server cabinet, while the low profile design only requires 1U. Our fixed shelf features ventilation holes to keep equipment running cool and is available in two depths.

Technical Drawing



Product Specifications

- Product Type:** Fixed Shelf
- Material:** 16 Gauge Cold Rolled Steel
- Finish:** Black Powder Coated
- Loading Capacity:** 200 lbs
- Dimensions (HxWxD):** Varies By Item #
- Rack Unit Quantity:** 1U
- Mounting Hardware:** Included
- Compliance & Standards:** RoHs Compliant
- Quantity Per Package:** Sold Individually

Ordering Information

Description		
1U Fixed Shelf		
Item #	Rack Units	Dims (H x W x D)
RASF211	1U	1.24" X 19" X 21.5"
RASF281		1.24" X 19" X 28.5"

TECHNICAL SHEETS ARE SUBJECT TO CHANGE WITHOUT NOTICE.

REV.20200901.1